

BikTek



PRODUCT CATALOGUE

**General
Purpose
Switchgear**

www.biktek.in

BIKTEK INDUSTRIES





About us

BikTek products are at the forefront of innovation in the field of electrical components for Agricultural, Industrial and Residential sectors. Founded by Mr. Harsh Agrawal in 2015.

BikTek is a brand with a reputation of total Commitment towards satisfying our customers with best quality product. **BikTek** has entire range of Auto Switches, Digital Volt-Amp Meter, Air Break Direct-On-Line Starters, Star Delta Control Panels, Complete Range of Change Over and all type of Main Switches.

BikTek, Along with its channel Partners have a modernized infrastructure, machinery, testing facilities and R&D department that strives hard to maximize product serviceability while minimizing manufacturing costs. Due to toughest Quality control tests **BikTek** products carry the assurance of International quality standards.

OUR STRENGTH IS QUALITY SERVICE & UPGRADATION

INDEX

1. Automatic Motor Starter Controller (AutoSwitch)
2. Projection Meter-Digital Ampere + Volt Meter
3. Direct-On-Line Motor Starters (Air Break)
4. Single Phase Submersible Pump Control Panels
5. Direct-On-Line Control Panels
6. Star Delta Control Panels
7. Air Break Contactors (Type H,K,U,L)
8. Thermal Overload Relays (Type H,K,U,L)
9. Kit Set For Contactors
10. Coils
11. Auxillary Blocks
12. Thermal Overload Timer
13. Push Buttons

BikTek

Automatic Motor Starter Controller (Auto Switch)

BIKTEK Auto Switch offers complete protection up to motor terminals from single phasing and unbalanced voltage conditions. They trip the motor starter if it goes beyond the set level of voltage and does not allow motor to start under unfavorable supply conditions.

Salient Features



Microprocessor Technology



Unbalanced Voltage Protection



Different Indication For Reverse Phase

- Microprocessor Technology
- Different Indications for Reverse Phase & Voltage fault
- Automatically starts the motor
- Protects motor from running in Two Phases
- Protects motor against unbalanced Voltage conditions
- Protects motor against reverse running
- Gives satisfactory results for any HP Motor



| CAT NO. | WIRE | SUITABLE FOR | PRICE |
|-----------|------|--------------|--------|
| ASPP-DL 5 | 5.00 | DOL | 640.00 |
| ASPP-DL 6 | 6.00 | DOL | 660.00 |
| ASPP-SD 6 | 6.00 | S/D | 720.00 |
| ASPP-SD 9 | 9.00 | S/D | 740.00 |

PROJECTION METER- WALL METERING

BIKTEK brings to you highly durable Digital Voltage and Ampere Meter for Agricultural Use.

Salient Features



Microprocessor Technology

- Microprocessor Technology
- Accurate Voltage and Ampere Reading
- External Current Transformer Provided for ampere reading
- Double Display for Simultaneous Reading of Voltage & Ampere
- Highly Durable, designed for Extreme Conditions



| CAT NO. | Amp/Volt | SUITABLE FOR | DISPLAY | PRICE |
|---|------------|---------------|---------|--------|
| PMD-AV01 | 0-30A/300V | PANEL CABINET | DOUBLE | 400.00 |
| PMD-AV02 | 0-60A/500V | PANEL CABINET | DOUBLE | 440.00 |
| PMD-AV03 | 0-99A/500V | PANEL CABINET | DOUBLE | 460.00 |
| (OVERLOAD +DRY RUN) PROTECTION+ONLY STOP TIMER | | | | |
| PMD-AV04 | 0-30A/300V | PANEL CABINET | SINGLE | 850.00 |
| PMD-AV05 | 0-60A/500V | PANEL CABINET | SINGLE | 870.00 |
| PMD-AV06 | 0-99A/500V | PANEL CABINET | SINGLE | 890.00 |
| WALL MOUNTING | | | | |
| PMD-AV07 | 0-60A/300V | WALL MOUNTING | DOUBLE | 470.00 |
| PMD-AV08 | 0-99A/500V | WALL MOUNTING | DOUBLE | 490.00 |

BikTek

Direct On-Line Motor Starter (Air Break)

Direct-On-Line Starters are the most common type of AC motor Starters used for switching AC Motors/Submersible pumps up to 20 HP. When energized, a direct on line (DOL) starter immediately connects the motor terminals directly to the power supply. A direct on line starter can be used if the high inrush current of the motor does not cause excessive voltage drop in the supply circuit. BIKTEK Motor Starters are configured from high quality material and give highly efficient performance and provides complete protection from Overloading and Short Circuit. The contacts used in contactors are of high quality Silver Cadmium Oxide that provides long life and millions of trouble free operations.



AIR BREAK DIRECT-ON-LINE STARTER TYPE SDL-K

| CAT NO. | HP | RELAY RANGE | PHASE | PRICE |
|--------------|-------|-------------|-------|-------|
| SDL-K SP 1 | 1.00 | 6-10A | S/P | 1700 |
| SDL-K SP 2 | 2.00 | 9-14A | S/P | 1700 |
| SDL-K SP 3 | 3.00 | 13-21A | S/P | 2080 |
| SDL-K TP 1 | 1.00 | 1.5-2.5A | T/P | 1700 |
| SDL-K TP 2 | 2.00 | 2.5-4A | T/P | 1700 |
| SDL-K TP 3 | 3.00 | 4-6.5A | T/P | 1700 |
| SDL-K TP 5 | 5.00 | 6-10A | T/P | 1700 |
| SDL-K TP 7.5 | 7.50 | 9-14A | T/P | 1700 |
| SDL-K TP 10 | 10.00 | 13-21A | T/P | 2080 |
| SDL-K TP 15 | 15.00 | 20-32A | T/P | 2140 |



Air Break Direct-On-Line Starter TYPE : SDL-U

| CAT NO. | HP | RELAY RANGE | PHASE | PRICE |
|--------------|-------|-------------|-------|-------|
| SDL-U TP 3 | 3.00 | 4-6.5A | T/P | 3255 |
| SDL-U TP 5 | 5.00 | 6-10A | T/P | 3255 |
| SDL-U TP 7.5 | 7.50 | 9-14A | T/P | 3255 |
| SDL-U TP 10 | 10.00 | 13-21A | T/P | 3765 |
| SDL-U TP 15 | 15.00 | 20-32A | T/P | 3765 |
| SDL-U TP 20 | 20.00 | 28-42A | T/P | 3995 |



Air Break Direct-On-Line Starter TYPE : SDL-L

| CAT NO. | HP | RELAY RANGE | PHASE | PRICE |
|-------------|-------|-------------|-------|---------|
| SDL-L TP 10 | 10.00 | 13-21A | T/P | 4990.00 |
| SDL-L TP 15 | 15.00 | 20-32A | T/P | 4990.00 |
| SDL-L TP 20 | 20.00 | 28-42A | T/P | 4990.00 |



SINGLE PHASE SUBMERSIBLE PUMP CONTROL PANELS

BIKTEK Single Phase Submersible Control panels are designed for switching on/off and protection of Single Phase Submersible Motors from overloading and short-circuiting with its most accurate thermal Bi-Metallic Overload relays. Utilization of finest quality raw material in the fabrication of panels renders them a long functional life. Housing is made of deep drawn CR sheet steel with best quality powder coating.



AIR BREAK SINGLE PHASE SUBMERSIBLE PANELS WITH H TYPE CONTACTOR TYPE : PSP (H)

| CAT NO. | HP | Starting Cap. (MFD) | Running Cap. (MFD) | PRICE |
|-------------|------|---------------------|--------------------|---------|
| PSP(H) -1 | 1.00 | 80/100 | 45.00 | 2920.00 |
| PSP(H) -1.5 | 1.50 | 100/120 | 50.00 | 2985.00 |
| PSP(H) -2 | 2.00 | 120/150 | 72.00 | 3190.00 |
| PSP(H) -3 | 3.00 | 150/200 | 100.00 | 3720.00 |



SMART AIR BREAK SINGLE PHASE SUBMERSIBLE PANELS WITH H TYPE CONTACTOR

TYPE : PSP H+

Digital Meter: Amp/Volt + (Overload + Dry Run) Protection + Only Stop Timer (Upto 999 Min.)

| CAT NO. | HP | Starting Cap. (MFD) | Running Cap. (MFD) | Price |
|-------------|------|---------------------|--------------------|---------|
| PSP(H+)-1 | 1.00 | 80/100 | 45.00 | 2980.00 |
| PSP(H+)-1.5 | 1.50 | 100/120 | 50.00 | 3045.00 |
| PSP(H+)-2 | 2.00 | 120/150 | 72.00 | 3250.00 |
| PSP(H+)-3 | 3.00 | 150/250 | 100.00 | 3780.00 |



Heavy Duty Air Break Single Phase Submersible Panels

TYPE: PSP

| CAT NO. | Type | HP | Starting Cap. (MFD) | Running Cap. (MFD) | Price |
|-----------|------|------|---------------------|--------------------|------------|
| PSP-K 3 | BCK | 3.00 | 200/250 | 100.00 | 4250 |
| PSP-U 3 | BCU | 3.00 | 200/250 | 100.00 | 5390 |
| PSP-U 5 | BCU | 5.00 | 250/300 | 100+72 | 5945 |
| PSP-U 7.5 | BCU | 7.50 | 250/300 | 100+100+72 | ON REQUEST |



Direct On-Line Control Panels

Direct On-Line Control Panels are used for switching three-phase AC Motors/Submersible pumps up to 20 HP at 415V AC. A direct on line panel can be used if the high inrush current of the motor does not cause excessive voltage drop in the supply circuit.

Salient Features

- Digital Voltage and Ampere Meter
- Protects motor from running in Two Phases.
- Protects motor against reverse running
- Overloading Protection with its most accurate thermal Overload relay
- Protects motor against Unbalanced voltages.
- Automatically starts the motor in healthy conditions.



Air Break Direct-On-Line Panel

TYPE : PDL-K

| CAT NO. | HP | RELAY RANGE | PRICE |
|---------|-------|-------------|---------|
| PDK-1 | 1.00 | 1.5-2.5A | 3780.00 |
| PDK-2 | 2.00 | 2.5-4A | 3780.00 |
| PDK-3 | 3.00 | 4-6.5A | 3780.00 |
| PDK-5 | 5.00 | 6-10A | 3780.00 |
| PDK-7.5 | 7.50 | 9-14A | 3780.00 |
| PDK-10 | 10.00 | 13-21A | 4250.00 |
| PDK-15 | 15.00 | 20-32A | 4435.00 |



Air Break Direct-On-Line Panel

TYPE : PDL-U

| CAT NO. | HP | RELAY RANGE | PRICE |
|---------|-------|-------------|---------|
| PDU-3 | 3.00 | 4-6.5A | 4985.00 |
| PDU-5 | 5.00 | 6.10A | 4985.00 |
| PDU-7.5 | 7.50 | 9.14A | 4985.00 |
| PDU-10 | 10.00 | 13.21A | 5445.00 |
| PDU-15 | 15.00 | 20.32A | 5485.00 |
| PDU-20 | 20.00 | 28.42.A | 5895.00 |



AUTOMATIC STAR DELTA CONTROL PANEL.

Star Delta Control Panels are used for switching three-phase AC motors with very high inrush current. BIKTEK Star/D Control Panel connects the motor to the power supply through a voltage reduction method and increases the applied voltage in steps by changing star to delta position automatically.

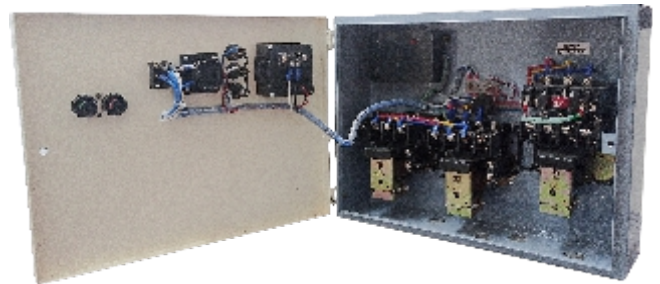
Salient Features

- Ampere + Digital Voltage Meter with Volt Selector Switch
- Microprocessor Technology
- Different Indications for Reverse Phase & Voltage fault
- Protects motor from running in Two Phases
- Protects motor against unbalanced Voltage conditions
- Protects motor against reverse running



Air Break Semi Automatic Star Delta Panels TYPE : PSA-K

| CAT NO | HP | RELAY RANGE | PRICE |
|----------|-------|-------------|---------|
| PSA-K 10 | 10.00 | 6-10A | 5985.00 |
| PSA-K 15 | 15.00 | 9-14A | 5985.00 |
| PSA-K 20 | 20.00 | 13-21A | 7175.00 |
| PSA-K 30 | 30.00 | 20-32A | 7275.00 |

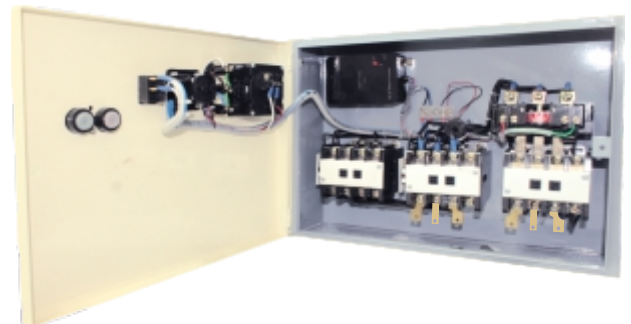


Air Break Fully Automatic Star Delta Panels TYPE : PFA-K

| CAT NO | HP | RELAY RANGE | PRICE |
|----------|-------|-------------|---------|
| PFA-K 10 | 10.00 | 6-10A | 6385.00 |
| PFA-K 15 | 15.00 | 9-14A | 6385.00 |
| PFA-K 20 | 20.00 | 13-21A | 7575.00 |
| PFA-K 30 | 30.00 | 20-32A | 7675.00 |

Air Break SEMI Automatic Star Delta Panels TYPE : PSA-U

| CAT NO | HP | RELAY RANGE | PRICE |
|----------|-------|-------------|-----------|
| PSA-U 10 | 10.00 | 6-10A | 9985.00 |
| PSA-U 15 | 15.00 | 9-14A | 9985.00 |
| PSA-U 20 | 20.00 | 13-21A | 11,475.00 |
| PSA-U 30 | 30.00 | 20-32A | 11,575.00 |
| PSA-U 40 | 40.00 | 28-42A | 12,485.00 |



Air Break Fully Automatic Star Delta Panels TYPE : PFA-U

| CAT NO | HP | RELAY RANGE | PRICE |
|----------|-------|-------------|-----------|
| PFA-U 10 | 10.00 | 6-10A | 10,980.00 |
| PFA-U 15 | 15.00 | 9-14A | 10,980.00 |
| PFA-U 20 | 20.00 | 13-21A | 12,420.00 |
| PFA-U 30 | 30.00 | 20-32A | 12,570.00 |
| PFA-U 40 | 40.00 | 28-42A | 13,480.00 |

COMPONENT

IMAGE PREVIEW

IMAGE PREVIEW

Air Break Contactors Type: BC-H 2 Pole

| CAT NO. | PHASE | Amp. | Price |
|--------------|-------|------|--------|
| BC-H2 SP 16A | S/P | 16A | 454.00 |
| BC-H2 SP 25A | S/P | 25A | 515.00 |
| BC-H2 SP 40A | S/P | 40A | 535.00 |

Air Break Contactors Type: BC-K

| CAT NO. | PHASE | Amp. | Price |
|-------------|-------|------|---------|
| BC-K SP 16A | S/P | 16A | 805.00 |
| BC-K SP 25A | S/P | 25A | 1115.00 |
| BC-K TP 16A | T/P | 16A | 805.00 |
| BC-K TP 25A | T/P | 25A | 1115.00 |

Air Break Contactors Type: BC-U

| CAT NO. | PHASE | Amp. | Price |
|-------------|-------|------|---------|
| BC-U SP 16A | S/P | 16A | 1495.00 |
| BC-U SP 25A | S/P | 25A | 1915.00 |
| BC-U SP 32A | S/P | 32A | 2115.00 |
| BC-U SP 40A | S/P | 40A | 2385.00 |
| BC-U TP 16A | T/P | 16A | 1495.00 |
| BC-U TP 25A | T/P | 25A | 1915.00 |
| BC-U TP 32A | T/P | 32A | 2115.00 |
| BC-U TP 40A | T/P | 40A | 2385.00 |

Air Break Contactors Type: BC-L

| CAT NO. | PHASE | Amp. | Price |
|----------|-------|------|---------|
| BC-L 1 | T/P | 16A | 1275.00 |
| BC-L 1.5 | T/P | 25A | 1685.00 |
| BC-L 2 | T/P | 32A | 3635.00 |
| BC-L 3 | T/P | 40A | 4155.00 |
| BC-L 4 | T/P | 63A | --- |

Magnetic Coil TYPE: MC-H

| CAT NO. | For | Volt | PRICE |
|----------|---------|------|---------|
| MC-H | BC-H | 220V | 195.00 |
| MC-K SP | BC-K | 220V | 245.00 |
| MC-K TP | BC-K | 440V | 245.00 |
| MC-U SP | BC-U | 220V | 390.00 |
| MC-U TP | BC-U | 440V | 390.00 |
| MC-L 1.5 | BC-L1.5 | 440V | 390.00 |
| MC-L 2 | BC-L2&3 | 440V | 715.00 |
| MC-L 4 | BC-L4 | 440V | 1040.00 |

Auxillary Blocks TYPE: AB

| CAT NO. | For | Price |
|---------|------|--------|
| AB-K | BC-K | 165.00 |
| AB-H | BC-H | 190.00 |
| AB-U | BC-U | 245.00 |

Thermal Overload Timer TYPE: TOT

| CAT NO. | For | Price |
|---------|------|--------|
| TOT-K | BC-K | 275.00 |
| TOT-U | BC-U | |

Push Button Type: PB

| CAT NO. | For | Price |
|---------|-----|-------|
| PB-K | BCK | 40.00 |
| PB-U | BCU | 60.00 |



Thermal Overload Relays For Air Break Contactors Type: TOR-H

| CAT NO. | Range | Price |
|---------|----------|--------|
| TOR-H | 1.5-2.5A | 520.00 |
| TOR-H | 2.5-4A | 520.00 |
| TOR-H | 4-6.5A | 520.00 |
| TOR-H | 6-10A | 520.00 |
| TOR-H | 9-14A | 520.00 |
| TOR-H | 13-21A | 520.00 |
| TOR-H | 20-32A | 560.00 |

Thermal Overload Relays For Air Break Contactors Type: TOR-K

| CAT NO. | Range | Price |
|---------|----------|--------|
| TOR-K | 1.5-2.5A | 410.00 |
| TOR-K | 2.5-4A | 410.00 |
| TOR-K | 4-6.5A | 410.00 |
| TOR-K | 6-10A | 410.00 |
| TOR-K | 9-14A | 410.00 |
| TOR-K | 13-21A | 410.00 |
| TOR-K | 20-32A | 450.00 |

Thermal Overload Relays For Air Break Contactors Type: TOR-U

| CAT NO. | Range | Price |
|---------|--------|---------|
| TOR-U | 4-6.5A | 895.00 |
| TOR-U | 6-10A | 895.00 |
| TOR-U | 9-14A | 895.00 |
| TOR-U | 13-21A | 895.00 |
| TOR-U | 20-32A | 895.00 |
| TOR-U | 28-42A | 935.00 |
| TOR-U | 40-63A | 1055.00 |

Thermal Overload Relays For Air Break Contactors Type: TOR-L

| CAT NO. | Range | L1 | L2/L3 | L4 |
|---------|--------|-----|-------|------|
| TOR-L | 6-10A | 795 | - | -- |
| TOR-L | 9-14A | 795 | 895 | -- |
| TOR-L | 13-21A | 795 | 895 | -- |
| TOR-L | 20-32A | - | 895 | -- |
| TOR-L | 28-42A | - | 935 | -- |
| TOR-L | 40-63A | - | - | 3895 |

KIT SET TYPE: KS

| CAT NO. | For | Amp. | Price |
|----------|----------|------|---------|
| KS-H2 | BC-H | 16A | 260.00 |
| KS-H2 | BC-H | 25A | 390.00 |
| KS-H2 | BC-H | 40A | 520.00 |
| KS-K | BC-K | 16A | 235.00 |
| KS-K | BC-K | 25A | 405.00 |
| KS-U | BC-U | 16A | 325.00 |
| KS-U | BC-U | 25A | 715.00 |
| KS-U | BC-U | 32A | 910.00 |
| KS-U | BC-U | 40A | 1110.00 |
| KS-L 1.5 | BC-L 1.5 | 25A | 415.00 |
| KS-L 2 | BC-L 2 | 32A | 1040.00 |
| KS-L 3 | BC-L 3 | 40A | 1235.00 |
| KS-L 4 | BC-L 4 | 63A | 3115.00 |



BikTek

GENERAL TERMS & CONDITIONS:

1. This price list supercedes all previous price lists.
2. Prices are subject to change without any prior notice and those ruling at the time of dispatch shall be applicable.
3. Prices are inclusive of GST.
4. All products are guaranteed for 6 months against any manufacturing defect.
5. Prices are F.O.R ghaziabad.

AUTHORISED DEALER/DISTRIBUTOR:

